



## ADAPTABLE MOUNTING SYSTEM FOR CONTROLLED MULTI-DIRECTIONAL OUTPUT

- Overcomes ambient noise of industrial environments
- Provides maximum speech recognition and tone reproduction
- Produces 111dBc to 121dBc @ 100'
- Three mounting kits available
- UL and cUL Listed

# Directional Speaker Array

## Model DSA

Federal Signal's Model DSA Directional Speaker Array provides excellent voice and tone reproduction and is ideal for overcoming high levels of industrial noise.

Design flexibility allows the user to combine up to four speaker arrays; each array will hold from two to six re-entrant speakers. Speakers have a 70° horizontal angle of dispersion, accommodating specific sound output patterns. (When vertical stacks are placed 90° apart, a 180° horizontal coverage is possible.)

The Model DSA mounting kits allow for multiple speaker arrays to be mounted on the same pole at 90° increments. The downward tilt can be adjusted by 15°. The mounting flexibility of this system allows the speakers to be pointed directly at a targeted area for more concentrated sound output.

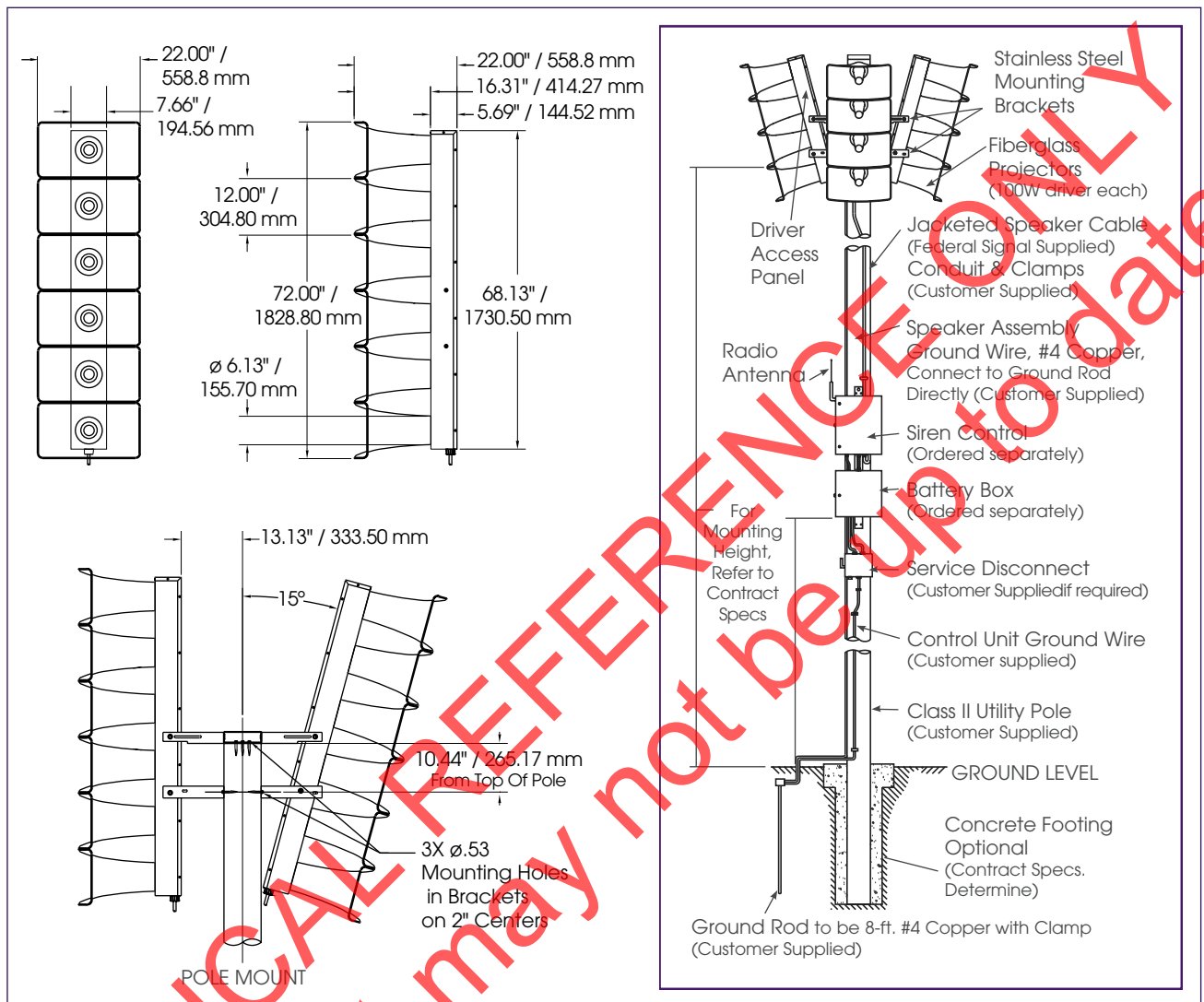
A DSA consists of a corrosion resistant aluminum frame with fiberglass projectors and stainless steel mounting hardware. Each speaker contains a high-efficiency 100 watt driver.

Amplification, tone generation and signal timing are provided by the Model UV controller, purchased separately.

Ideal for outdoor industrial plant warning, the Model DSA speaker array allows sound coverage to be customized to each site, preventing wasted sound in and around the plant. The Model DSA provides better speech intelligibility within a coverage zone than omni-directional speaker arrays.

| Model | No. of 100W Speakers | Total Watts | Decibels @ 100' | Effective Range | Net. Wt. lbs./kg |
|-------|----------------------|-------------|-----------------|-----------------|------------------|
| DSA2  | 2                    | 200         | 111dBc          | 1,700'          | 43/19.5          |
| DSA3  | 3                    | 300         | 115dBc          | 2,200'          | 80/36.2          |
| DSA4  | 4                    | 400         | 117dBc          | 2,600'          | 95/43.1          |
| DSA5  | 5                    | 500         | 119dBc          | 3,000'          | 110/49.9         |
| DSA6  | 6                    | 600         | 121dBc          | 3,400'          | 125/56.7         |

## DIRECTIONAL SPEAKER ARRAY (DSA)



### SPECIFICATIONS

Color: Black projectors with Off-White Housing  
 Paint: TGIC - Polyester Powder Coat, highly corrosion resistant  
 Frequency Response: 300Hz - 4000Hz

### HOW TO ORDER

Contact our Federal Signal Sales Engineers to design a system that meets your specific requirements.

Considerations for system configuration:

- The DSA speaker array is used in conjunction with the UV controller. The UV houses the amplifiers that drive the DSA speaker array. Each DSA is made up of individual 100 watt speakers.

**FOR EXAMPLE:** A DSA4 has four 100 watt speakers.

- Multiple DSA arrays can be controlled by a single UV

as long as the total wattage meets or exceeds the total wattage required by the DSAs. The total watt required is the sum of all 100 watt speakers from each DSA.

### MOUNTING KITS

| Model      | Mounting Configuration                                 |
|------------|--|
| DSAMK1     | One vertical support wall mount                        |
| DSAMK2     | Two vertical supports 180° apart on pole               |
| DSAMK4     | Four vertical supports 90° or 180° apart, pole mounted |
| DSAMKSP    | Mounting Kit for steel pole for (1) vertical stack     |
| DSAMKSPB45 | Mounting Bracket for steel pole for (1) vertical stack |

### REPLACEMENT PARTS

| Description      | Model    |
|------------------|----------|
| Driver, 100 watt | 8570063A |