



## FOR VANDAL-RESISTANT ACTIVATION OF EMERGENCY SYSTEMS

- “Evacuation” and “Emergency” stations available
- Quick reset
- Cover with alarm discourages tampering
- ADA Compliant
- UL and cUL Listed and CSFM Approved

# Push Button Stations

## Model PS Series

These multi-purpose, initiating devices cover a wide range of industrial and commercial applications. The Federal Signal push-button stations function like a traditional fire alarm “pull station”, providing a simple contact closure to activate emergency equipment, audible and visual signals and alarm panels.

The push button stations are available in two colors — Red or Yellow. The red “Emergency” and yellow “Evacuation” units have a “Push and Turn” reset button.

Each unit is available with or without a tamper-resistant polycarbonate cover. Covered units work to protect against physical damage to the station and to prevent false alarms without restricting use in emergency situations. When the cover is lifted to gain access to the alarm, a piercing tone sounds, calling immediate attention to the area. The piezo horn is quiet once the cover is closed. Power to the piezo alarm is provided by a 9VDC battery (included). The sounder cover mounts easily over the station with four anchor screws.

The terminal block provides easy installation and maintenance. Units mount on existing single-gang electrical boxes or 4" x 4" electrical boxes with plaster ring adapters (customer supplied).

Units are UL and cUL Listed, meeting Type 3R specifications for outdoor use with the cover and gasket (gasket not included). They are also ADA Compliant (requiring less than five foot pounds for activation).

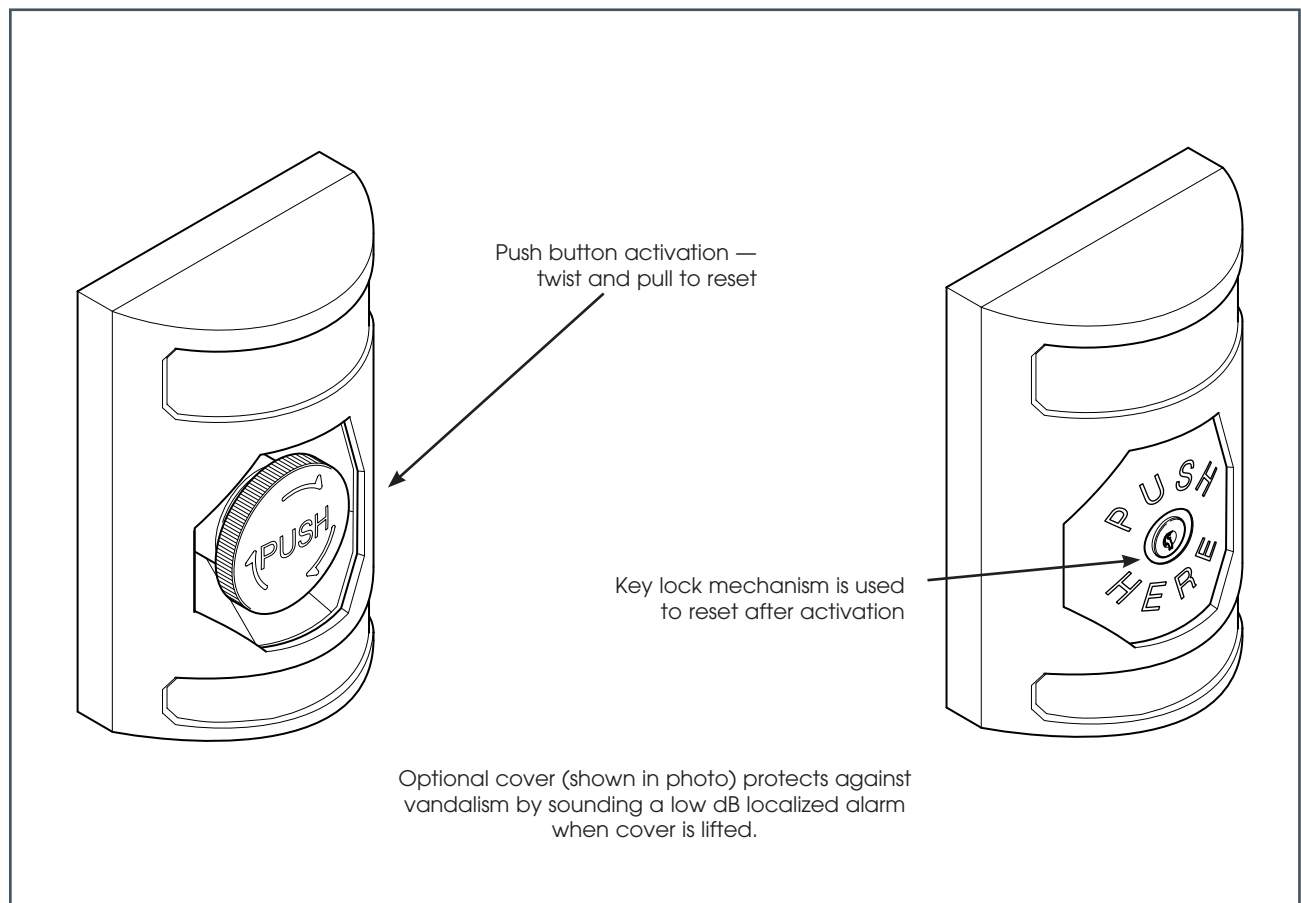
Contact ratings for the Push Button Stations are 600VAC @ 3 amps and 250VDC @ 1 amp.

| MODEL   | DESCRIPTION   |
|---|---|
| <b>PUSH BUTTON STATION (Shown At Top)</b>                       |   |
| PSEV-Y  | Yellow Station with Push & Turn Reset Button — “EVACUATION”                 |
| PSEM-R  | Red Station with Push & Turn Reset Button — “EMERGENCY”                     |
| <b>PUSH BUTTON STATION WITH SOUNDER COVER (Shown At Bottom)</b> |   |
| PSEVSC-Y  | Yellow Station with Push & Turn Reset Button & Sounder Cover — “EVACUATION” |
| PSEMSC-R  | Red Station with Push & Turn Reset Button & Sounder Cover — “EMERGENCY”     |

**Note:** Other colors and text available upon request.



## PUSH BUTTON STATIONS (PS SERIES)



### SPECIFICATIONS

|                  |          |          |
|------------------|----------|----------|
| Net Weight:      | 3.3 lbs. | 1.5 kg   |
| Shipping Weight: | 4.2 lbs. | 5.94 kg  |
| Height           |          |          |
| without Cover:   | 4.9"     | 124.5 mm |
| with Cover:      | 8.4"     | 213.4 mm |
| Width            |          |          |
| without Cover:   | 3.25"    | 82.6 mm  |
| with Cover:      | 5.5"     | 139.7 mm |
| Depth            |          |          |
| without Cover:   | 2.0"     | 50.8 mm  |
| with Cover:      | 2.4"     | 61.0 mm  |

### HOW TO ORDER

- Specify model number
- Please refer to Model Number Index PS beginning on page 377

### ACCESSORIES

| <u>Description</u>             | <u>Part Number</u> |
|--------------------------------|--------------------|
| Cover Only, Evacuation, Yellow | PSCE-Y             |
| Cover Only, Emergency, Red     | PSCE-R             |
| Contact, normally open         | K229277A           |
| Contact, normally closed       | K229277A-01        |